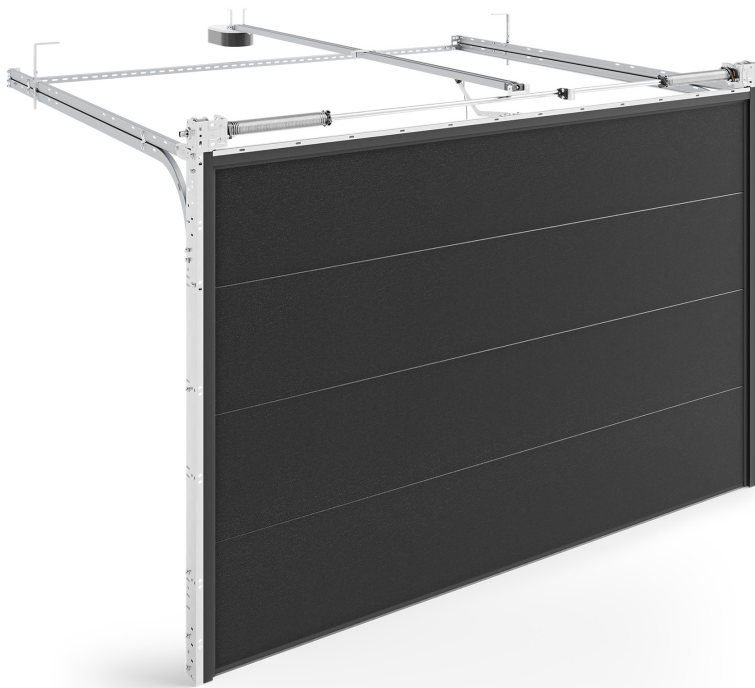


# INFINITI Thermo F – doors with torsion springs (front)



- ✓ panel thickness: 60 mm
- ✓ maximum door weight: 295 kg
- ✓ minimum jamb width: 100 mm
- ✓ minimum lintel height: 200 mm
- ✓ panels painted in RAL colours or veneered
- ✓ smooth or high embossed panels
- ✓ front torsion springs

**0.81**

Heat transfer  
coefficient U [W/m<sup>2</sup>K]\*

**0.89**

Heat transfer  
coefficient U [W/m<sup>2</sup>K]\*\*

**6 m**

maximum width

**3 m**

maximum height

**18 m<sup>2</sup>**

maximum size\*\*\*

The purpose of the **INFINITI Thermo F sectional garage door** is to **secure garages, mainly in detached and semi-detached homes**. The torsion spring system mounted at the front of the door enables lifting the largest curtains among the available solutions, providing an excellent solution for large garages.

**Thermo doors use 60 mm thick panels**, significantly reducing the thermal transmittance of the door curtain, resulting in improved garage thermal performance and lower energy losses for the whole building. The panels have the same thickness throughout their entire length, guaranteeing the highest thermal performance at every point of the door. Together with a **system of double-lip gaskets with an additional thermal chamber protecting**

**against heat loss** that may occur along the perimeter of the door panels, the result is a product that offers excellent performance.

INFINITI Thermo F is a fully secure proposition thanks to the technologies used. The specially designed **shape of the panels reduces the risk of crushing fingers, the drive's amperometric sensor reacts to contact with obstacles**, and the spring breakage protection ensures that even **in the event of a malfunction, the door will not close uncontrollably**. Convenient operation, on the other hand, is ensured by electric drives controlled by wire, radio remote control, smartphone app, or smart home system.

The wealth of aesthetic options and several optional fittings make it possible to select the ideal INFINITI Thermo F door configuration for every investor.

\*Heat transfer coefficient U [W/m<sup>2</sup>K] given for INFINITI Thermo sectional doors with dimensions of 5000 x 2500 mm. For gates without glazing, service doors, ventilation grilles.

\*\*Heat transfer coefficient U [W/m<sup>2</sup>K] given for INFINITI Thermo sectional doors with dimensions of 2500 x 2250 mm. For gates without glazing, service doors, ventilation grilles.

\*\*\*For doors with a surface area of more than 15 m<sup>2</sup>, please contact the sales department.